



# SUPERIOR EMERGENCY LIGHTING PRODUCTS



[WWW.PROFILE.IE](http://WWW.PROFILE.IE)



**PEX-LED**

- Robust white powder coated sheet steel housing
- Maintained LED
- Optional ISO legends
- 30M viewing distance
- Multiple fixing points including BESA
- DALI/CBS
- 5 years product warranty
- 3 years battery warranty



**REX-LED**

- Recessed white RAL9010 powder coated sheet steel housing
- Maintained LED
- Optional ISO legends
- 28M viewing distance
- DALI/CBS
- 5 years product warranty
- 3 years battery warranty



**SLD-28/NST**

- Modern, low profile blade Exit
- Maintained LED
- Optional ISO legends
- 20M viewing distance
- Multiple mounting options
- CBS
- 5 years product warranty
- 3 years battery warranty



**PLD-25/NST**

- High technology LED luminaire
- Maintained & non-maintained operation
- Suitable for ceiling/wall & flag mounting
- NiMh & LiFePO<sub>4</sub> batteries available
- 26m viewing distance
- IP44
- 5 years product warranty
- 3 years battery warranty



**CLD-30/NST**

- Aluminium/Plexiglass Exit luminaire
- Maintained & non-maintained operation
- Quick and easy mounting
- 30m viewing distance
- IP44
- 5 years product warranty
- 3 years battery warranty



**KLR-20/NST**

- Double/single sided polycarbonate Exit, IP54
- Maintained & non-maintained operation
- DALI available
- Wedged shaped legend 20m viewing distance
- 5 years product warranty
- 3 years battery warranty



**WBH-LED/DS/EXIT**

- Double sided IP65 rated polycarbonate housing
- Maintained LED
- Optional ISO legends
- 30M viewing distance
- DALI/CBS
- 5 years product warranty
- 3 years battery warranty



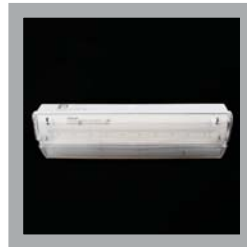
**PEX-LED/IP56**

- IP56 Gewiss enclosure
- Maintained LED
- Optional ISO legends
- 40M viewing distance
- DALI/CBS
- 5 years product warranty
- 3 years battery warranty



**CES5/IP65**

- Slimline surface Led Exit, IP65
- Maintained & non-maintained, DALI & self test
- Optional recessed mounting kit
- Polycarbonate construction
- Long life LiFePo<sub>4</sub> batteries
- Legend kit supplied
- 5 years product warranty
- 3 years battery warranty



**WBH-LED**

- IP65 polycarbonate bulkhead
- Maintained & non-maintained LED
- Available in prismatic or opal diffuser
- ISO legends available to order
- DALI/CBS
- 5 years product warranty
- 3 years battery warranty



**Aviator-HO-LED**

- High output LED bulkhead, IP65
- Maintained operation/DALI/self test
- 800 lumen output (2 x LED strip Pcb's)
- Polycarbonate base & clear fresnel lens
- Hinged steel gear tray
- 5 years product warranty
- 3 years battery warranty



**Futura-LED corrosion proof**

- IP65 waterproof polycarbonate
- Mains or maintained LED
- IK10
- 44w, 6010 lumens delivered
- CRI:80, 4000k
- Stainless steel clips
- 5 years product warranty
- DALI



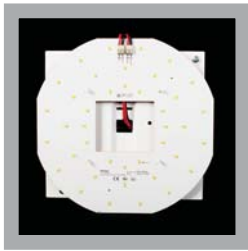
**PRO-LED**

- 3 watt recessed downlight
- Non maintained LED
- Easily installed using supplied clips
- 206 lumen output
- 5 lux at safety equipment
- IP44 version available for shower cubicles
- 5 years product warranty
- 3 years battery warranty



**N-Light Panel connect**

- Dali addressable EL panel
- 128 DALI
- Networkable panels
- Intuitive colour coded display
- Recessed or surface mounted
- Ethernet port for commissioning
- 5 years product warranty
- 3 years battery warranty



**C2000-LED Gear Tray**

- Retrofit gear tray
- Replaces 2D fluorescent
- Mains or maintained LED
- 2000 lumen mains, 360lm emergency
- 50,000 hour lamp life
- Microwave sensor
- DALI
- 5 years product warranty
- 3 years battery warranty



**XYLUX/LR4**

- Open area and corridor lens
- DALI
- Recessed with articulated remote control gear
- 3 watt LED 180lm
- 3 hour non maintained LED
- 5 years product warranty
- 3 years battery warranty



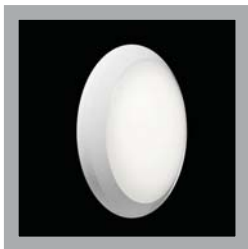
**PRO2000 IP65 Die Cast**

- Circular die cast aluminium, IP65 housing in silver or black
- Open or eyelid diffuser
- Mains or maintained LED
- 2000 lumen mains, 360lm emergency
- 50,000 hour lamp life
- Microwave sensor, DALI/CBS
- 5 years product warranty
- 3 years battery warranty



**XYLUX/LD5**

- Self contained
- Dali addressable
- Surface or recessed
- 3 watt LED, 148lm
- 3 hour non maintained LED
- 5 years product warranty
- 3 years battery warranty



**PRO-ECOLED**

- Stylish circular IP65 LED bulkhead
- Polycarbonate construction UL94
- Tridonic LED array & driver
- Mains, maintained & DALI
- Dimming & integral sensor options
- Bezel colour options
- 5 years product warranty
- 3 years battery warranty



**XYLUX LS**

- High performance IP65 surface mounted luminaire
- Choice of lenses
- Mounting heights up to 30 metres
- DALI addressable, 200lm
- 3 hour non maintained LED
- 5 years product warranty
- 3 years battery warranty



**TL-LED**

- IP65 robust slim line enclosure
- Non-maintained LED
- Tridonic LED array & driver
- High intensity 2no. 2.2w LED lamps
- Multi directional beams
- DALI
- 5 years product warranty
- 3 years battery warranty



**XYVEX/EXITS**

- Architectural LED Exit
- Different mounting options
- Various legends in compliance with ISO3864-Parts 1 & 3
- DALI
- 3 hour maintained LED
- 5 years product warranty
- 3 years battery warranty



**GRL29/WP**

- High output polycarbonate twin spot
- Non-maintained & self test options
- 2x9 LED (1620 lumens)
- IP42&65 options
- 5 years product warranty
- 3 years battery warranty



**ICE**

- Discreet emergency option
- DALI, 180lm
- Can be recessed into luminaire for sustained operation
- 3 hour non maintained LED
- Supplied with remote gear
- 5 years product warranty
- 3 years battery warranty



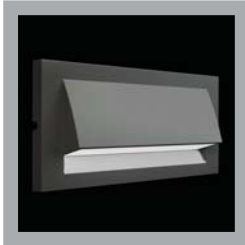
#### WKLOR3

- Wireless addressable module 250/500/1000 luminaires
- Max range between luminaire 30m
- Radio frequency 868Mhz
- No visible antenna
- No communication wiring required
- Full range of wireless luminaires available



#### ILDF023WL

- No visible antenna
- Wireless addressable recessed 3w LED
- 3 hour operation
- RAL 9003
- NiMh 4.8v/2.0Ahr
- Temperature range - 5/40 Deg C
- 100mm diameter



#### ZAW013SC-AZ

- Maintained/mains/wireless addressable
- Zinc die-cast LED luminaire wall/step light
- Colour RAL 7016
- Dimensions 315x140x65mm
- Output mains & emergency 170 lumens
- Battery type life PO4 3.2V/0.57Ah



#### Power-Pro EL 1/1

- Static inverter 500va-3Kva single phase
- True sinewave & PWM microprocessor technology
- Built in 6 way distribution
- LCD display an audible audible alarm
- Internal battery compartment
- 10 year design sealed lead acid batteries



#### ELMOD Series 1/1&3/1

- Static inverter 4Kva-24Kva
- 24kVA power cabinet, built up of 4kVA power modules
- 1/1 & 3/1 configuration via display
- True sinewave output
- No break load transfer for use with discharge lamps
- Deep discharge protection
- Front access for ease of repair



#### Power-Pro EL Options & Accessories

- Output distribution panel
- Maintenance bypass panel
- Phase failure monitoring
- Sub circuit monitoring panel
- Light switch control relays
- Lighting control interface

## About Us



Profile offers emergency lighting solutions, emergency central power and lighting control systems. The company strategy is to establish a business providing a complete emergency lighting service to meet the safety, technical, design and service demands of our customers.

We partner with some of the leading lighting companies in the market, **Mackwell**, **Tridonic**, **Liteplan** and **Olympia Electronics**.

Profile Emergency Lighting business is broken down into a number of sections.

1. Emergency Lighting, Luminaires.
2. Dali addressable emergency lighting suppliers and integrators.
3. Centrally supplied power systems.
4. Modification of mains lighting to incorporate emergency inverter packs.
5. Manufacturing of emergency lighting products.
6. Maintenance and commissioning to IS3217 2013 +A1 2017.
7. Emergency lighting designers using Dialux, Relux and Lighting Reality.

Operating from a 6500sq-ft. factory unit just off the M11 Profile Emergency Lighting is ideally positioned to provide a distribution centre and conversion unit supplying our customers.

## A Selection of Clients

### Recent projects completed include:

- LinkedIn HQ – Dublin 2
- WeWork – Charlemont Exchange Dublin 2
- Indeed HQ – Dublin Capital Dock
- Miesian Plaza – Dublin (Department of Health)
- Baggot Plaza – Dublin (Bank Of Ireland Head Office)
- Barclays Bank – Dublin 2
- Lansdowne Place Apartments – Dublin 4
- Shire Pharma – Dunboyne Co. Meath
- Blenders – Dublin 24
- Combilift – Monaghan
- Pairc Ui Chaoimh Stadium – Cork
- Cork Airport – Cork
- Stryker – Limerick
- Liebherr Cranes – Killarney Co. Kerry

### HSE Primary Care Centres:

- Ballymote Co. Sligo
- Ballinrobe Co. Mayo
- Kells Co. Meath
- Tuam Co. Galway
- Waterford
- Summerhill Dublin 1

### Office Of Public Works Projects:

- Tullamore Government Offices
- DPP. Dublin
- Kevin St Garda Station – Dublin
- Lansdowne House Dublin 4
- CSO Mahon Cork
- Kilkenny Government Offices



## Key Projects



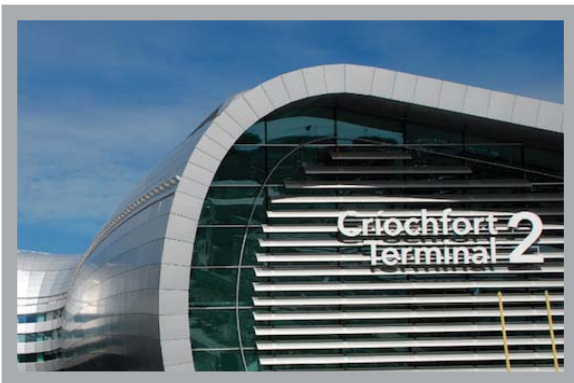
### Indeed HQ, Capital Dock, Dublin 2

Profile Emergency Lighting Ltd. supplied the emergency lighting solution for Indeed new European, Middle East and Africa Headquarters in Dublin. Comprising of 219,000 sq. ft. of office space stretching between Sir John Rogerson's Quay and Grand Canal Basin.



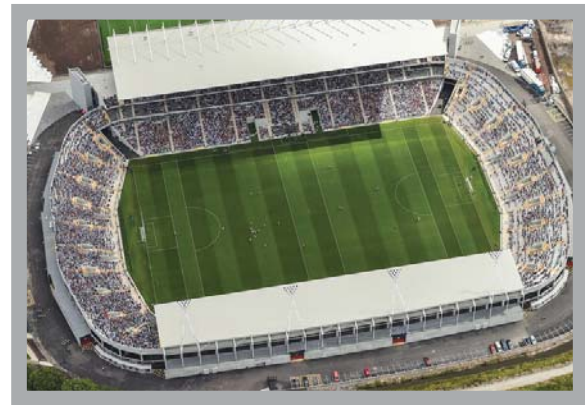
### LinkedIn EMEA HQ Dublin 2

Profile Emergency Lighting Ltd. Supplied the Emergency Lighting Solution for LinkedIn's new €85million HQ in Dublin. Profile supplied a fully addressable Emergency Luminaires which enables automatic testing of the installation and automatically reporting of any faults identified in accordance with the requirements of IS3217 2013 + A1 2017.



### Dublin Airport Authority

For the Dublin Airport Authority, we supplied a reliable emergency lighting system to Terminal 2. The complex system was capable of running the emergency lighting load at 100% for 180 minutes with a minimum break during change over time.



### Pairc Ui Chaoimh Cork

Profile Emergency Lighting Ltd. were delighted to provide the Emergency Lighting Solution for both the North & South Stands including both terraces at the City and Blackrock ends of the 45,000 capacity stadium. Profile supplied 4 No. Static Inverter systems to provide Emergency Lighting for the Stadium in the event of a power failure.



### CombiLift Global HQ Annahagh Monaghan

Profile Emergency Lighting Ltd. supplied a fully integrated DALI Addressable Emergency Lighting solution for CombiLift's Global €50 million 46,500 sq.m (500,000sq.ft) HQ. CombiLift is a global leader in the design and manufacture of equipment for material handling sector.

## Services

Commissioning to IS3217 2013 +AI2017

Emergency lighting maintenance

Central power system maintenance

Emergency lighting design service

Dialux | Relux | Lighting Reality

LED and fluorescent lighting conversion  
to emergency using quality approved  
branded components:

Tridonic | Mackwell | Liteplan | Olympia Electronics

ELP | N-Light | BPC Energy | RP Group

**TRIDONIC**



Profile Lighting and Power,  
4 Bray South Business Park,  
Killarney Road, Bray,  
Co. Wicklow, Ireland.  
A98 KX92

T: +353 1 276 2888  
E: [sales@profile.ie](mailto:sales@profile.ie) W: [profile.ie](http://profile.ie)