

PEX-LED/IP56

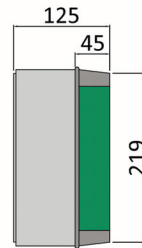
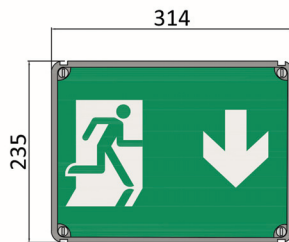
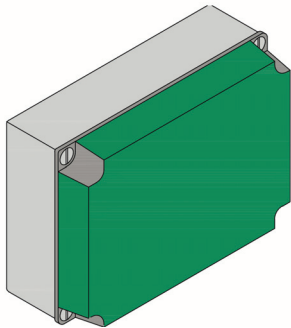


DESCRIPTION

IP56 Gewiss polycarbonate enclosure with optional ISO legends.
Maintained LED.

SPECIFICATIONS

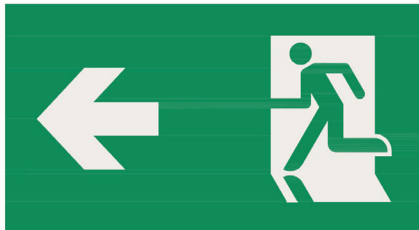
PEX-LED/IP56 (add options from icons).



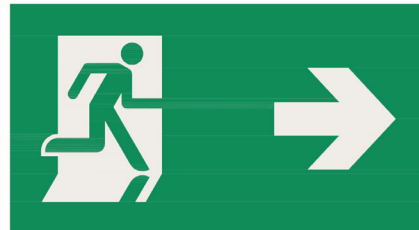
SPECS AND OPTIONS

			230V 50Hz
Temp. range 5°-50°C	EN 60598-1 COMPLIANT	IP56	MODE M
LED INSIDE	DALI OPTIONAL	CBS OPTIONAL	
	WARRANTY 5 YR	WARRANTY 3 YR BATTERY	BATTERY NiCd
3.6V 1.8Ah Type "S/C" NiCd	INPUT VA 10.0	EN 60598-2.22 COMPLIANT	

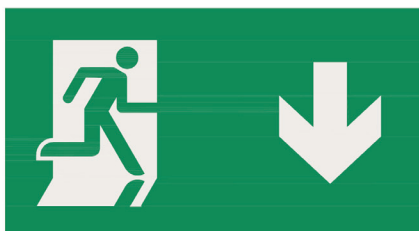
ISO LEGEND OPTIONS



202



203



205



206